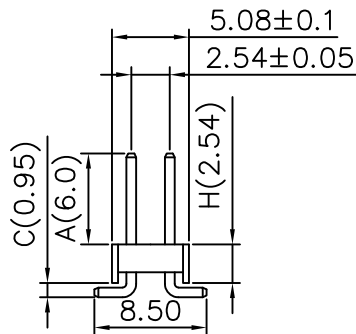
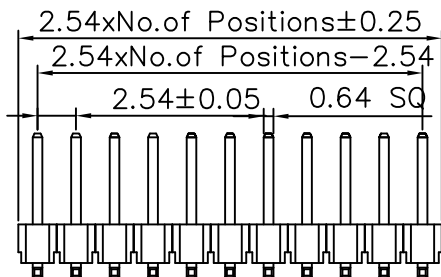
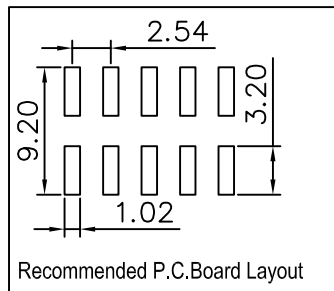
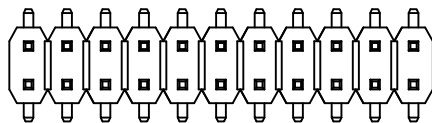


REV NO.	REVISION NOTE	REVISER	DATE
V0	NEW DRAWING		2023/01/07



APPLICATION AND FEATURES

- 1.Side on end stackable(on unbrken edges).
- 2.Noteches for easy breakable.
- 3.Maintains the dimension between two P.C Board.
- 4.Varizble pin length,gold or tin plated.
- 5.Standlffs facilitate plsty soldering clean.

SPECIFICATIONS

Current Rating:3A
 Contact Resistance: 30mΩ Max
 Insulator resistance:1000MΩ Min
 Dielectric withstandinga:AC 500V
 Operating Temperature:-40°C~ +105°C
 Contact Material:Brass or Phosphor bronze
 Lnsuiator Material:Polyester,UL94V-0
 Standard:P.B.T
 Finish:Tin,gold Duplex plated
 Note:
 Duples plating:gold plated on contact area,
 Tin on solder area

		深圳市新世联电子有限公司 TEL:+86(755)29912370 FAX:29912372			
Tolerance Unless Otherwise Specified		Title PH2.54 双排单塑排针 SMT			
.X ~ ±0.30		Units mm	Scale 2:1	REV NO. V0	Material No. XXXXX-XXXXXX-XXX-XX
.XX ~ ±0.25					
.XXX ~ ±0.20	Drawing By	Date	Reviewed By	Date	Approvai By Date
Angle ~ ± 3°	ChenShan	2023/01/07			

打印日期:2023/1/9 14:12:11

B

A

D

C

B

A